



VERSATILE ROLL FORMING
SOLUTIONS TAILORED FOR
YOUR NEEDS

Founded in the year 1990, Aparna Enterprises Limited is a force to be reckoned with across several industries, such as RMC (ready-mix concrete), uPVC Windows and Door Systems, uPVC Profiles, Tiles, Sanitary Ware & Kitchens, CMS and Rollforming Products, Sheet Metal Fabrication, Aluminium Windows & Door Systems, and Facades & Exteriors. Innovation and high-grade quality are what make Aparna what it is today. We have an excellent reputation among customers who keep coming back to us for all their needs.

At AEL, customer satisfaction continues to remain our top priority, and the new advent of technology helps us accomplish the same with a greater degree of success. We constantly strive to reach new heights and set precedents across the industry. Today, we are acknowledged as an industry leader providing specifiers, contractors, and stakeholders with a range of high-quality products manufactured to the highest standards.

With reliability as our North Star over three decades, we are driven with the same passion and zest to keep elevating your lifestyle to a whole another level.

OUR MISSION

1. Our mission is anchored upon our deep-rooted belief and realization that every building manifests noble aspirations and solid purpose and is as follows.
2. To engineer excellence and build world-class materials while setting new benchmarks and standards in the industry.
3. To build and nurture trusted partnerships that align with our core values and commitments and scale the Indian construction space to newer heights.

OUR VALUES

Integrity
Enduring Relationships
Consistency
Transparency
Professionalism
Future Readiness

Aparna Rollform: Innovating Across Industries

Welcome to Aparna Rollform, where we manufacture high-quality products designed for diverse sectors, including commercial spaces, infrastructure, and the power sector. Our commitment to excellence, skilled workmanship certified in WPL, and timely deliveries has established us as a trusted partner for businesses seeking reliable solutions.

We are a leading manufacturer specializing in high-quality roll-formed products, utilizing cutting-edge automated machinery to streamline our operations. Our advanced technology ensures precision and consistency in every piece we produce. The automated machines not only enhance efficiency but also reduce lead times, allowing us to meet tight deadlines without compromising on quality. With a focus on innovation and reliability, we've positioned ourselves as a go-to source for various industries requiring custom roll-formed solutions. Our commitment to leveraging high-end technology reflects our dedication to excellence and customer satisfaction.

Our Products:

- Cable Trays
- Raceways & Junction Boxes
- Solid Bottom Trays & Trunking
- Gratings
- Solar Mounting Structures
- Earthing & Lightning Materials
- False Ceiling Channels (Mega Project)
- uPVC Steel Reinforcements



Cable Trays

Our cable trays are designed using advanced **high-speed cold roll forming mills** for single-line operations, including punching, bending, and cutting, ensuring precision and durability.

Specifications:

Types Available:

- Perforated Trays
- Ladder Trays
- Solid Bottom Trays
- Trunking
- Raceways
- Junction Boxes

Finishes Offered:

- Pre-Galvanized
- Hot-Dip Galvanized
- Powder Coated
- Aluminium
- Stainless Steel
- Paints

Testing Standards:

Compliant with **IEC 61537** standards for cable trays.
Hot-dip galvanization adheres to **IS 2629, IS 2633, IS 4759 and IS 6745 (7 tank process)** standards.

Monthly Production Capacity:

Up to **1,000 tons**, including gratings, UPVC reinforcement channels, and false ceiling sections



Perforated cable trays

Perforated type cable trays are ideal for applications that require moderate ventilation and cable visibility. They provide a balance of airflow and cable support. They are appropriate for applications where cable cooling is critical.

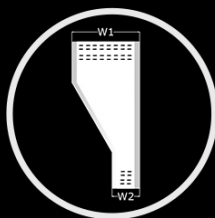
Tray Width (W)(mm)	Tray Height (H)(mm)	Tray Collar (C)(mm)	Tray Length (L)(mm)	Thickness (T)(mm)	Perforation Details (mm)	Types of Raw Material	Finish
50 to 1500	25 to 120	15 to 45	2500 to 6000	1.6 to 3.0	Slot Size 20 x 10	Mild Steel (M.S) IS: 1079 - 2017/IS: 10748 - 2004/IS: 2062 - 2011 Stainless steel (S.S) Grade 304 & 316L Aluminium (Al) IS: 1100	1. Hot Dip Galvanized (HDG) 2629:2001, IS 2633:1986, IS:4759:1996 2. Galvanized sheet (GI) IS 277:2003 80-120GSM, 3. Powder Coated (as per customer requirement) 4. Aluminium (Al) 5. Stainless Steel (S.S) Grade 202, 304 & 316L



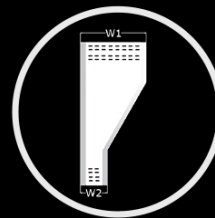
Perforated Cable Accessories:



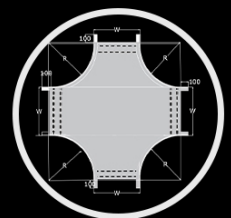
Equal Reducer



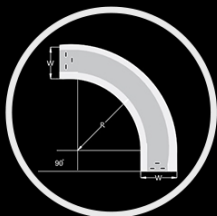
Left Hand Reducer



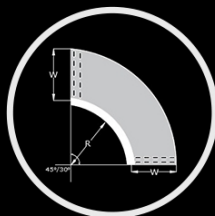
Right Hand Reducer



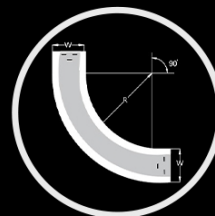
Horizontal cross



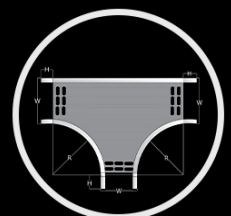
90° Horizontal Bend



90° Vertical Outside Bend



90° Vertical Inside Bend



Horizontal Tee

Radius	Types of Bends	Degrees
300/450/600/1000mm or as per the choice of customers	Horizontal, Vertical (Inside/Outside), Tees (Equal & Un-equal), Crosses, Reducers	45,90 for Bends

Ladder cable trays

Ladder cable trays offer strong support for heavy-duty cables. Their ladder-like rungs provide high load-bearing capability, making them ideal for applications involving a large number of wires. They consist of longitudinal runners and cross-sectional frames called rungs, which are welded onto the side collar of the runner to enhance strength. These rungs are specifically customized in the range of 250 to 300 mm, ensuring durability and structural integrity.

Types of ladder Cable Tray:

- 1) Welded rung type cable tray
- 2) Bolt fitted rung type ladder cable tray

Tray Width (W)(mm)	Runner Height (H)(mm)	Runner Collar (C)(mm)	Rung size (mm)	Thickness (T)(mm)	Perforation Details (mm)	Types of Raw Material	Finish
50 to 1500	50 to 120	15 to 25	30 x 15 to 50 x 20	1.6 to 3.0	Rung Distance 250 c/c to 300, Slot Size 20x10 Rung	Mild Steel (M.S) (IS: 1079 /IS: 10748 /IS: 2062) Stainless steel (S.S) Grade 304 & 316 Aluminium (Al) (IS: 1100)	1.Galvanized Sheet (GI) IS 277:200380-120GSM 2.Hot Dip Galvanized (HDG)2629:2001, Is 2633:1986,IS:4759:1996 3.Powder Coated (as per customer requirement) 4.Stainless Steel (SS) Grade 304 &316L 5.Aluminium(Al) 6. Painted Cable Trays

Ladder Cable Accessories:



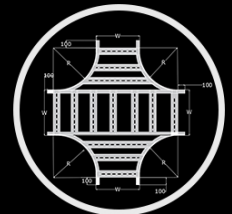
90° Vertical Outside Bend



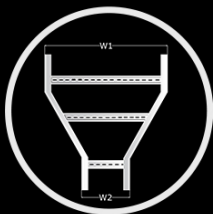
90° Vertical Inside Bend



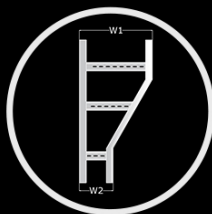
90° Horizontal Bend



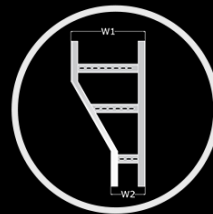
Horizontal cross



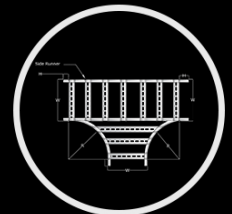
Equal Reducer



Right Hand Reducer



Left Hand Reducer



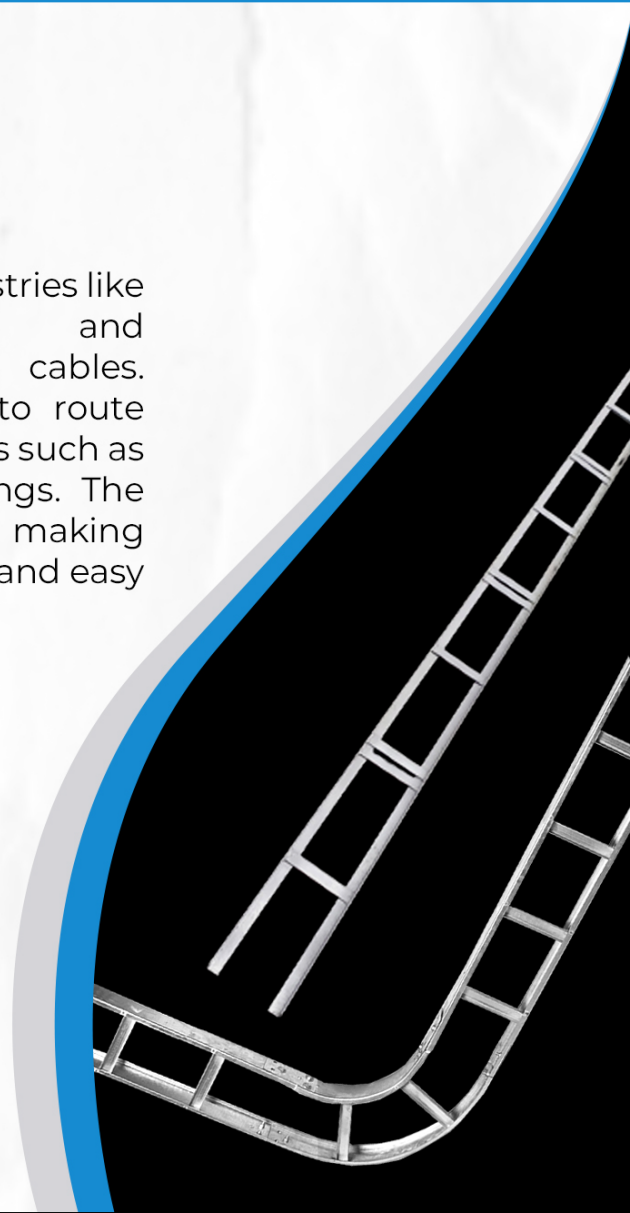
Horizontal Tee

Radius	Types of Bends	Degrees
300/450/600/1000mm or as per the choice of customers	Horizontal, Vertical (Inside/Outside), Tees (Equal & Un-equal), Crosses, Reducers	45,90 for Bends

Angular cable trays

Angular ladder cable trays are widely used in industries like power distribution, telecommunications, and manufacturing for organizing and supporting cables. These trays provide a safe and efficient way to route electrical, control, and data cables in environments such as factories, power plants, and commercial buildings. The angular design offers robust structural support, making them suitable for heavy-duty cable management and easy cable access for maintenance.

These cable trays are also ideal for harsh conditions, such as in the oil & gas and marine industries, where cables are exposed to extreme temperatures, humidity, and corrosive elements. By improving cable organization and preventing damage, angular ladder trays ensure the safety and reliability of critical systems. They are an essential solution for maintaining efficient and safe cable management in complex infrastructure and industrial applications.



Runner Angle Size (mm)	Rung Flat Size (mm)	Angular Length (L) (mm)	Thickness (T) (mm)	Types of Raw material	Finish
25 x 25 x 3 to 100 x 100 x 6	25 x 3 to 50 x 6	2500 to 6000	3.0 & (above)	Mild Steel (M.S) IS: 2062	1. Hot Dip Galvanized (HDG) 2629:2001, IS 2633:1986, IS:4759:1996 2. Powder Coated (as per customer requirement) 3. Red Oxide (Paint)

Raceways

Our raceways provide a secure pathway for electrical wiring, ensuring organisation and protection within commercial spaces. Designed for easy installation and adaptability, they cater to diverse project requirements.

Raceways Base :

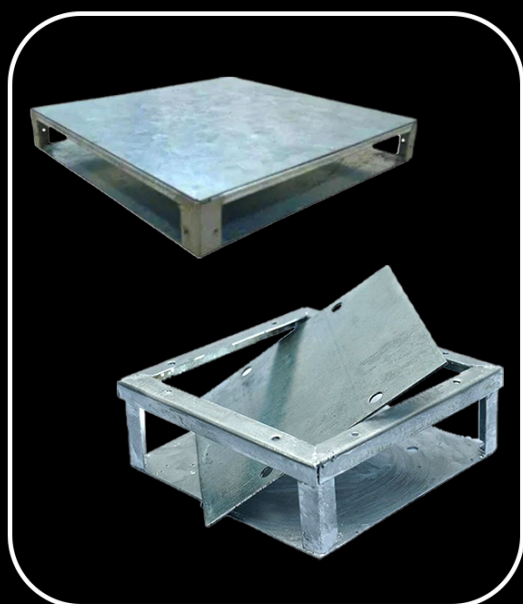
Product Name	Compartments	Raceway Width (W)	Raceway height (H)	Raceway Thickness (T)	Raceway Length (L)	Types of Raw material	Finish
Raceways with covers	1/ 2/ 3 compartment depends on raceways size	50 mm to 300 mm	25mm & 38 mm / 40 mm	1.6mm / 2.0mm	2500mm or 3000mm	GI sheet /Aluminium	Galvanized sheet (GI)/ Hot Dip Galvanized / Powder Coated / Aluminium

Raceways Covers :

Cover Width (W)(mm)	Cover height (H) (mm)	Cover Collar (C)(mm)	Cover Length (L) (mm)	Thickness (T) (mm)	Cover Clamp Size (mm)	Types of Raw Material	Finish
50 to 1000	15 to 25	15 to 25	2500 to 3000	1.6 to 3.0	25 x 2 25 x 3	Pre Galvanized IS: 277 Mild Steel (M.S) IS: 1079 /IS: 10748 /IS: 2062 Aluminium (Al) IS: 737 Stainless Steel (SS) Grade 202,304 & 306	Same as cable tray finish or as per site requirements



Junction Box



Aparna Rollform's Junction Boxes are durable, precision-engineered enclosures designed to protect electrical connections in industrial and commercial setups. Built for strength and reliability, they ensure safety, efficient cable management, and seamless connectivity in wiring systems

Sizes of Junction Boxes (mm)	Base Thickness (T) (mm)	Height (h) (mm)	Types	Finish
150, 225,300, & 400	1.6 to 2	50/70 mm (Or as per specifications)	All the junction boxes are square /rectangular as per site requirements	Galvanized sheet (GI)/ Powder Coated/ Aluminium / Stainless Steel ((as per customer requirement)

Solid Bottom Type Cable Trays

Solid bottom type cable trays provide complete support and protection for cables. They are ideal for environments where dust and debris protection is necessary, offering a secure enclosure for sensitive wiring.

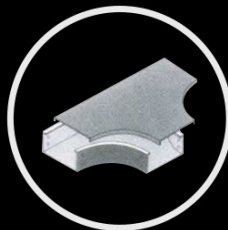
Product Name	Width (W)	Height (H)	Thickness (T)	Length (L)	Types of Raw Materials	Finish
Solid Bottom Type Cable Trays	50 mm to 300 mm	25 mm & 38 mm/40 mm	1.6 mm / 2.0 mm / 3.0 mm	2500 mm or 3000 mm	GI Sheet / Aluminium	Galvanized sheet (GI)/ Hot Dip Galvanized / Powder Coated / Aluminium



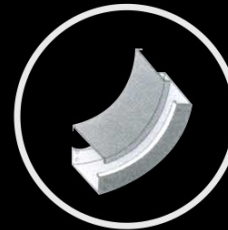
Solid Bottom Cable Accessories:



Horizontal Cross



Horizontal Tee



90° Vertical Inside Bend

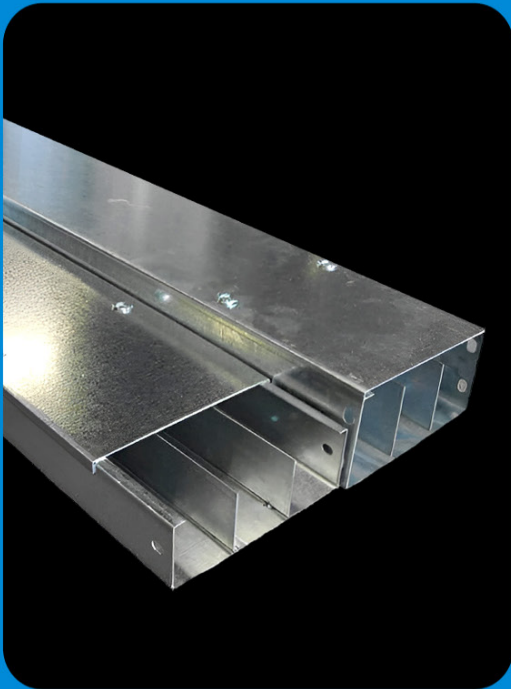


90° Vertical Outside Bend



90° Horizontal Bend

Radius	Thickness	Types	Finishes
150/300/450/600mm or as per the choice of customers	1.6mm to 3mm	4way & 2way	Galvanized sheet (G) Powder Coated Enamel Painted.



Trunking

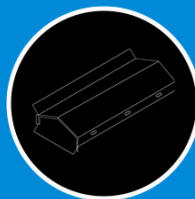
Our trunking systems offer a reliable and organized solution for protecting and managing cables in industrial and commercial environments. Made from high-quality materials like galvanized steel and aluminum, they are durable, corrosion-resistant, and ideal for both indoor and outdoor applications. Available in various sizes and configurations, our trunking ensures efficient cable routing, protection, and safety, meeting specific project needs.



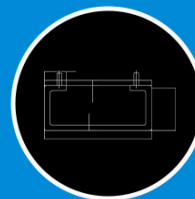
Covers

Cable tray covers enhance safety by providing a shield against accidental contact with cables. They also prevent debris accumulation, ensuring the longevity and reliability of cable installations. Our covers come with various fixing arrangements to meet different installation needs, including self-tapping, clamping, and press-type options, ensuring secure and efficient installation for all types of environments.

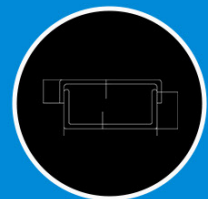
Types of Covers:



Hut Type Cover

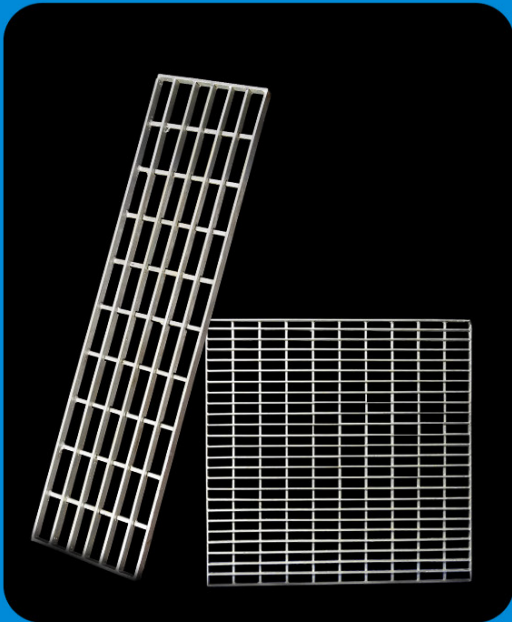


Flat Cover



U Type Cover

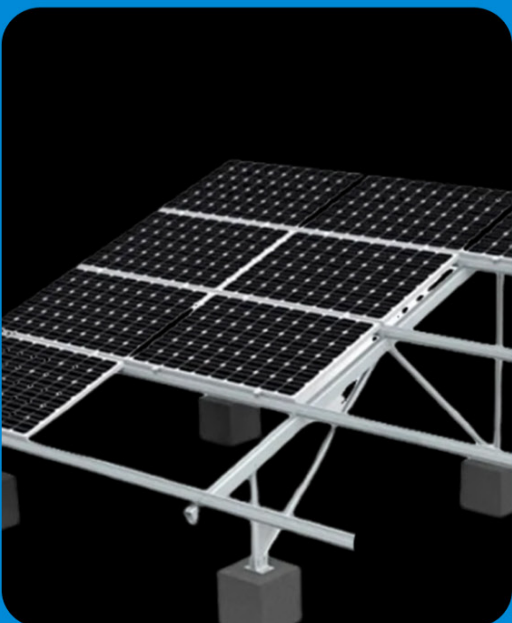
Cover Width (W)(mm)	Cover height (H) (mm)	Cover Collar (C)(mm)	Cover Length (L) (mm)	Thickness (T) (mm)	Cover Clamp Size (mm)	Types of Raw Material	Finish
50 to 1000	15 to 25	15 to 25	2500 to 3000	1.6 to 3.0	25 x 2 25 x 3	Pre Galvanized IS: 277 Mild Steel (M.S) IS: 1079 /IS: 10748 /IS: 2062 Aluminium (Al) IS: 737 Stainless Steel (SS) Grade 202,304 & 306	Same as cable tray finish or as per site requirements



Gratings

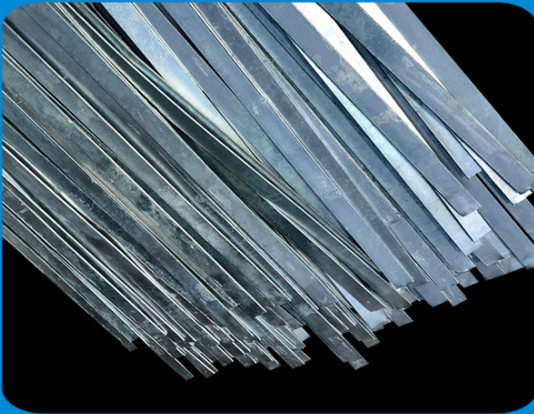
Our gratings combine durability and versatility, making them ideal for industrial, agricultural, and infrastructure applications. They offer excellent load-bearing capacity, safety, and easy maintenance. A finishing process enhances grip and reduces slip risks, ensuring safety in various environments. Our gratings are widely used in infrastructure projects such as bridge decks, walkways, platforms, drainage systems, and ventilation covers, providing strength and reliability to withstand heavy traffic and harsh conditions.

Width (W) (mm)	Length (L) (span) (mm)	Cross Bars (Square bar) (mm)	Bearing Bars Sizes	Sizes	Types of Raw Material	Finish
250 to 1400	500 to 3000	6, 8, 9, 10 -12, Flat Bars	25 x 5, 25 x 6, 32 x 5, 32 x 6 (or As per Customer Requirement)	As per Customer Requirement	Mild Steel (M.S) IS: 1079 /IS: 10748 /IS: 2062 Aluminium (Al) IS: 737 Stainless Steel (SS) Grade 304 & 306	1. Hot Dip Galvanized (HDG) 2629:2001, IS 2633:1986, IS:4759:1996 2. Red Oxide, 3. Aluminium (Al) 4. Stainless Steel (S.S) Grade 304 & 316



Solar Mounting Structures

We offer ground-mounted and rooftop solar mounting structures designed for superior stability. We use the latest and most durable materials, ensuring high performance and long-term satisfaction that match client needs. Our solutions are available in both fixed and adjustable designs, using pre-galvanized, galvanized, Galvalume, AZ 150, 550 GSM, and HDG products that meet UV protection standards. This ensures maximum efficiency for solar arrays, enhancing durability in various environmental conditions.



Earthing & Lightning Materials

With a focus on customer satisfaction, we provide individualized assistance to help you find the best earthing solutions for your specific requirements. Trust us for dependable, high-quality earthing products that ensure the safety and efficiency of your systems.

Our Finishing Process is essential for earthing materials to maintain consistent conductivity and corrosion resistance. A well-finished product meets quality standards and customer expectations, enhancing performance in safety applications.

Types	Size	Length	Types of Raw material	finish
1. Earthing Flats	25 x 3	Random Length	Mild Steel (M.S) IS: 2062	Hot Dip Galvanized (HDG) 2629:2001
	25 x 5/6	5.5 to 6mtrs		
	25 x 5/6/8/9/10/12			
	32 x 5/6/8/10/12			
	40 x 4/5/6/8/10/12/16/20/25			
	50 x 5/6/8/10/12/16/20/25			
	65 x 6/8/10/12/16/20/25			
	75 x 6/8/10/12/16/20/25/32			
	100 x 6/8/10/12/16/20/25			
	125 x 6/8/10/12/16/20/25			
	150 x 6/8/10/12/16/20/25			
	200 x 6/8/10/12/16			

Earthing Equipment Includes:

SWG/GI Wires

Copper Flats, Copper Plates,

Copper Bonded Pipes

Earthing Electrodes

Earthing Rods

CI Pipe Electrode

GI Pipe Electrode

Test Link Box

Lightning Arrester

Bushings/Insulators

GI Spike

Earth Bus

Earth Bar



False Ceiling Channels:

Our false ceilings are designed to enhance acoustics and energy efficiency in any room. We work with a variety of designs and materials to create visually appealing surroundings that also suit your practical requirements. We even offer the Finishing Process, which makes false ceiling channels appear clean and polished while ensuring durability. Finishing processes can also increase moisture and wear resistance, which is crucial for ceiling integrity over time.

Sections of False Ceiling	Width (W)	Height (H)	Thickness (T)	Finish
Ceiling Channel	As per standard Design	As per standard design	0.35mm to 0.9mm	1. Galvanized sheet (GI) 277:2003-80GSM, 2. Ultra Design
L-angle				
Intermediate Perimeter				

UPVC Steel Reinforcement

UPVC steel reinforcement strengthens window and door frames, providing enhanced durability and resistance to high pressure, wind loads, and temperature changes. It ensures long-lasting performance in harsh weather conditions.

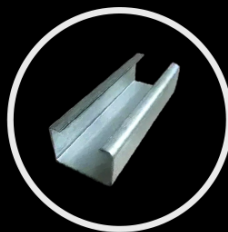
Sections of Reinforcement	Width (W) (mm)	Length (L) (mtr)	Thickness (T) (mm)	Finish
C-Channel Step Channel Open Lip Channel Box OSLC Channel Grove Channel	As per Profile Sizes /Shape	3.0 to 6.0	0.8 to 3.0	Galvanized sheet (GI) 80 GSM & 120 GSM



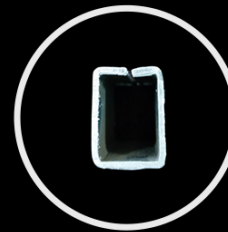
Types Of UPVC Steel Reinforcements:



Open Side Lip Channels



Open Lip Channels



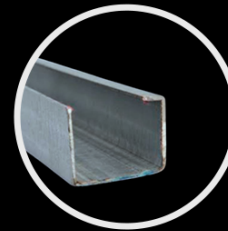
Box Channels



Step Channels



C Channels



Grove Channels

Certificates:

Aparna Rollform has recently achieved ISO certification, a testament to their commitment to sustainability and quality in our operations. This milestone reflects their dedication to minimising environmental impact while producing high-quality roll-formed products.



Sustainable Future:

By adhering to ISO standards, APARNA ROLLFORM demonstrates a proactive approach towards sustainable manufacturing practices. We focus on reducing waste, conserving resources, and utilising eco-friendly materials in their production processes. This not only benefits the environment but also ensures that their products meet rigorous quality and safety standards.

Our journey towards sustainability is marked by innovative practices that prioritize both customer satisfaction and ecological responsibility. With this ISO certification, APARNA ROLLFORM reinforces its position as a leader in the industry, committed to creating a greener future without compromising on quality.

Why Choose Aparna Rollform:

At the heart of Aparna Rollform is our dedication to fostering lasting relationships with our clients. We prioritise safety in all our operations, ensuring our products are reliable and meet the highest quality standards. You can count on us for timely deliveries that keep your projects on track.

Join us at Aparna Rollform as we innovate and provide exceptional products across various industries. Let's build a safer, more efficient future together!

Client logos



Hinduja National Power Corporation Ltd.



Aparna **RollForm**

Quality Forming

GET IN TOUCH WITH US

ADDRESS: SURVEY NO. 815, AA/1, PATANCHERU,
RUDRARAM, MANDAL, TELANGANA 502329
PHONE: +091540 88439 / 9154989193

[f /aparnarollform](#)

[@ /aparnarollform](#)

[in /aparnarollform](#)

info@aparnarollform.com

www.aparnarollform.com



SCAN FOR WEBSITE

